

**AGENDA**  
**REGULAR DRAINAGE MEETING**  
**September 27, 2019 at 10:00 AM**

1. Open Meeting
2. Approve Agenda
3. Introductions/Attendance
4. Explanation Of Project

Documents:

[DD 25 LAT 3 MAP.PDF](#)

5. Comments/Discussion
6. Possible Action
7. Other Business
8. Adjourn Meeting



Area of concern where district tile may need to be offset to avoid damage to private tile.

Fiber optic through tile per CCTV

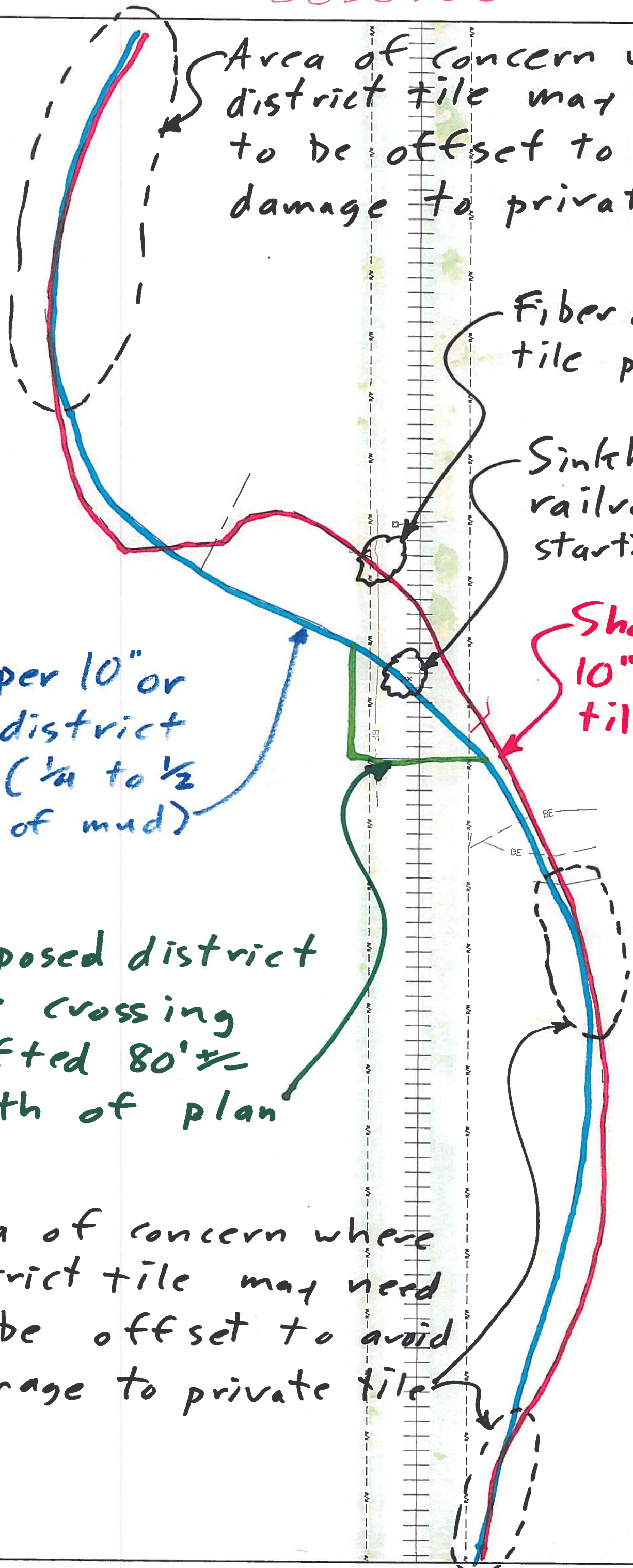
Sinkholes in railroad ballast starting

Shallower 10" private tile

Deeper 10" or 12" district tile (1/4 to 1/2 full of mud)

Proposed district tile crossing shifted 80'± South of plan

Area of concern where district tile may need to be offset to avoid damage to private tile



DRWN BY: MAJ	APPROVED BY: LOG	REVISIONS:	CGA
DATE: 1/20/2016	PROJ. NO.:		
FIELD BK:			
PROJECT: REPAIRS TO MAIN AND LAT 3 DD 25 HARDIN COUNTY, IOWA 2019			
ADDRESS: 739 PARK AVENUE ACKLEY, IOWA 50601 PH 641-847-3273 FAX 641-847-2303			
SHEET NO.: 1 OF 1			<small>Clapsaddle-Garber Associates, Inc. Main Office: 16 East Main Street Marshalltown, Iowa 50158 PH 641-752-8701 www.cgaconsultants.com</small>